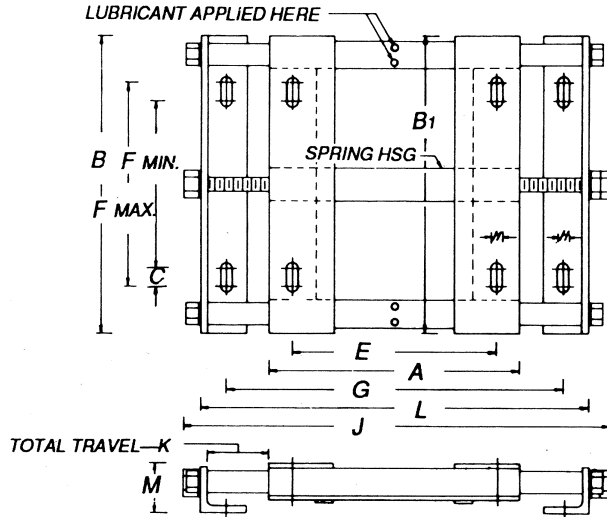
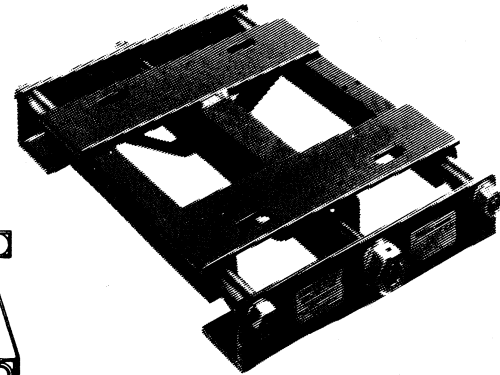


The 600 Series "Automatic"[®] Motor Base



END VIEW OF MOTOR CARRIAGE SHOWING TRUSSES ON SIZES 607 THROUGH 624.

A VERTICAL BASE SHOULD BE SPECIFIED WHERE THE RAILS OF THE BASE ARE TO BE INCLINED AT AN ANGLE OF 30° OR MORE FROM THE HORIZONTAL, AND WHERE THE MOTOR SHAFT IS HIGHER THAN THE DRIVEN SHAFT.

The 600 Series is for use with motors having a fixed diameter pulley. The 600 automatically compensates for variations in load, the expansion of belts due to centrifugal force and normally occurring belt stretch. This compensation is obtained by the unique combination of a one piece, freely movable, chatterless carriage acted upon by a spring contained within the carriage.

BASE NO.		NEMA Frame Equivalent	Max. Motor Wt.	Min. Pulley Dia.	A	B	B ₁	C	E	F _{MIN}	F _{MAX}	G + 1/2	H	J	K	L	M	WT.
Horizontal	Vertical																	
601		48-56	50	2	6 1/8	5 7/8	6 1/8	1/2	4 7/8	2 1/2	3 1/2	7	1 1/32	9 1/2	2 1/8	8 1/2	1 3/8	5
	602																	
603		66	70	2	7 3/8	8 1/8	8 3/8	5/8	5 7/8	4 3/8	5 5/8	8 3/4	1 3/32	11 1/4	2 5/8	10 1/4	1 3/8	6
	604																	
605		143-145	90	2	7	8 1/4	8 1/2	5/8	5 1/2	3 7/8	5 1/8	8 3/8	1 3/32	11 11/16	3	10 3/8	1 7/8	10
	606																	
607		182-184	110	2 1/2	9	9 3/8	9 5/8	5/8	7 1/2	4 3/8	5 5/8	10 1/4	1 3/32	14 1/16	3	12 1/2	2 1/8	18
	608																	
613		213-215	175	3	10 1/2	11 3/8	11 3/4	7/8	8 1/2	5 3/8	7 1/8	11 3/4	1 3/32	16 3/8	3 1/2	14 1/2	2 9/16	30
	614																	
621		254-256	280	4	12 1/2	15 1/4	15 1/2	1	10	8 7/8	10 7/8	14 3/8	9/16	19 1/2	4	17 7/8	3 1/8	50
	622																	
623		284-286	400	4 1/2	14	16 3/4	17	1	11	9 7/8	11 1/8	17	9/16	22 1/8	5	19 3/4	3 3/16	65
	624																	