



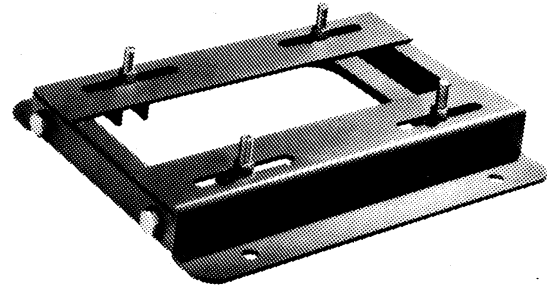
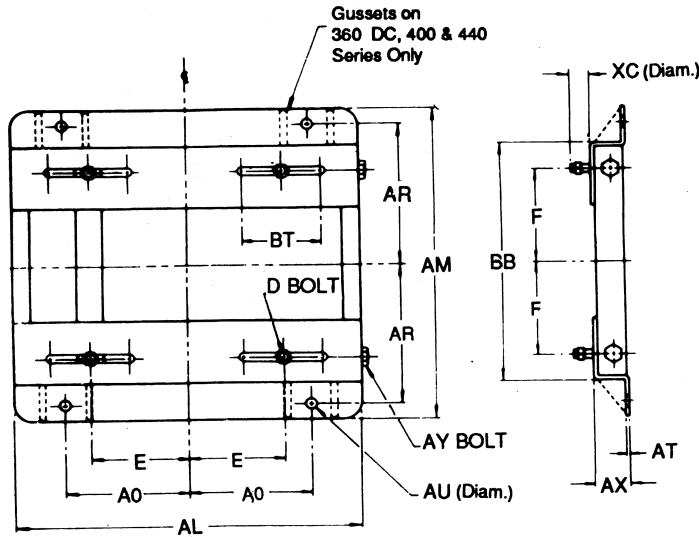
# OVERLY HAULTZ COMPANY

PO BOX 837 215 SOUTH WEST STREET LEBANON, OHIO 45036-0873  
 PHONE 513.932.0025 FAX 513.932.1688 WWW.OVERLYHAULTZ.COM

# NEMA

## STEEL ADJUSTABLE MOTOR BASES

### DOUBLE ADJUSTING BOLT



**STYLE B2**

**STOCK BASES**

FRAME & PART NO.	AL	AM	AX	BB	E	F	A0	AR	AU	BT	AT	XC	D BOLT	AY BOLT	APPROX. WT. (LBS)
254B2	17-3/4	15-1/8	2	10-3/4	5	4-1/8	6-1/4	6-5/8	5/8	4	3/16	1-3/8	1/2x1-3/4	5/8x9	17
256B2	17-3/4	16-7/8	2	12-1/2	5	5	6-1/4	7-1/2	5/8	4	3/16	1-3/8	1/2x1-3/4	5/8x9	18
284B2	19-3/4	16-7/8	2	12-1/2	5-1/2	4-3/4	7	7-1/2	5/8	4-1/2	3/16	1-5/8	1/2x2	5/8x9	21
286B2	19-3/4	18-3/8	2	14	5-1/2	5-1/2	7	8-1/4	5/8	4-1/2	3/16	1-5/8	1/2x2	5/8x9	22
*324B2	22-3/4	19-1/4	2-1/2	14	6-1/4	5-1/4	8	8-1/2	3/4	5-1/4	3/16	2-1/8	5/8x2-1/2	3/4x9	30
*326B2	22-3/4	20-3/4	2-1/2	15-1/2	6-1/4	6	8	9-1/4	3/4	5-1/4	3/16	2-1/8	5/8x2-1/2	3/4x9	31
*364B2	25-1/2	20-1/2	2-1/2	15-1/2	7	5-5/8	9	9-1/8	3/4	6	1/4	2	5/8x2-1/2	3/4x11	45
*365B2	25-1/2	21-1/2	2-1/2	16-1/2	7	6-1/8	9	9-5/8	3/4	6	1/4	2	5/8x2-1/2	3/4x11	46
404B2	28-3/4	22-3/8	3	16-1/2	8	6-1/8	10	9-7/8	7/8	7	1/4	2-9/16	3/4x3	3/4x14	55
405B2	28-3/4	23-7/8	3	18	8	6-7/8	10	10-5/8	7/8	7	1/4	2-9/16	3/4x3	3/4x14	56
444B2	31-1/4	24-5/8	3	19-1/4	9	7-1/4	11	11	7/8	7-1/2	5/16	2-1/2	3/4x3	3/4x14	74
445B2	31-1/4	26-5/8	3	21-1/4	9	8-1/4	11	12	7/8	7-1/2	5/16	2-1/2	3/4x3	3/4x14	75
447B2	31-1/4	30-1/8	3	24-3/4	9	10	11	13-3/4	7/8	7-1/2	5/16	2-1/2	3/4x3	3/4x14	89
449B2	31-1/4	35-1/8	3	29-3/4	9	12-1/2	11	16-1/4	7/8	7-1/2	5/16	2-1/2	3/4x3	3/4x14	95

Bases noted (\*) also available with gussets for additional strength; add the letter "G" after the part number. Example: 326-B2-G

**NON STOCK BASES**

FRAME & PART NO.	AL	AM	AX	BB	E	F	A0	AR	AU	BT	AT	XC	D BOLT	AY BOLT	APPROX. WT. (LBS)
364DCB2	25-1/2	20-1/2	2-1/2	15-1/2	7	5-5/8	9	9-1/8	7/8	6	1/4	2-9/16	3/4x3	3/4x11	47
365DCB2	25-1/2	21-1/2	2-1/2	16-1/2	7	6-1/8	9	9-5/8	7/8	6	1/4	2-9/16	3/4x3	3/4x11	48
366DCB2	25-1/2	23-1/4	2-1/2	18-1/4	7	7	9	10-1/2	7/8	6	1/4	2-9/16	3/4x3	3/4x11	49
404DCB2	28-3/4	22-3/8	3	16-1/2	8	6-1/8	10	9-7/8	1	7	1/4	3-1/16	7/8x3-1/2	3/4x14	56
405DCB2	28-3/4	23-7/8	3	18	8	6-7/8	10	10-5/8	1	7	1/4	3-1/16	7/8x3-1/2	3/4x14	57

AC & DC Bases Are Identical For Frames 254 Thru 326

**DIMENSIONS ARE IN INCHES:** Bases are furnished with one coat of corrosion-resistant gray primer and zinc plated nuts and bolts.

Bases listed may also be used if the motor frame is succeeded by S, T, TS, U, US or any letter combination as long as the motor complies with N.E.M.A.

The liability of the Overly-Haultz Company to the purchaser is limited to replacement of defective materials supplied. One year from the date of our shipment all liability shall terminate. There are no warranties which extend beyond the description on the face hereof.

**DIMENSION SHEET**  
**MB-200-B2**

CERTIFIED FOR: \_\_\_\_\_

FRAME \_\_\_\_\_ BY \_\_\_\_\_ DATE \_\_\_\_\_